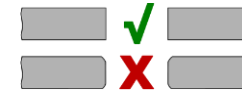
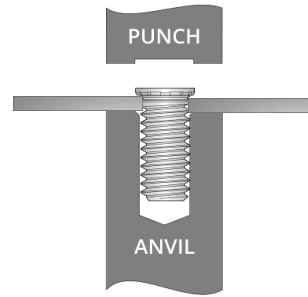
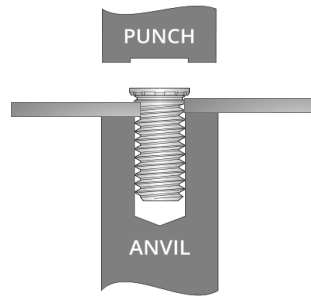
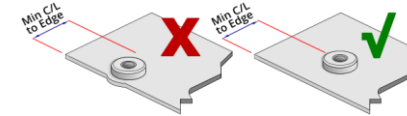


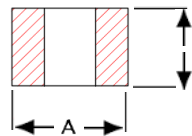
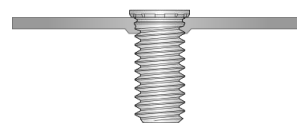
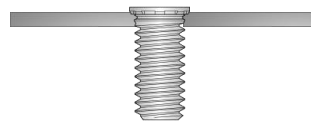
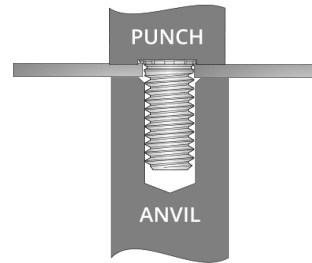
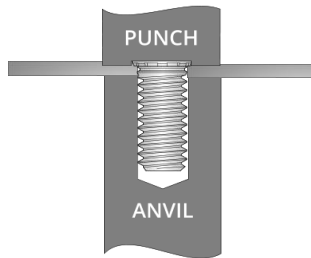
Self Clinch Thin Panel Non Flush Head Studs Installation Guide



Do Not Remove Any Extra Material OR Chamfer The Hole As This Could Result In Improper Installation Or Reduced Performance.

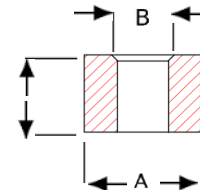


Ensure Attention Is Paid To The Minimum Hole Centreline To Edge Dimension For Each Fastener. Installing To Close To An Edge OR Bend Could Result In Improper Installation Or Reduced Performance. Minimum Centreline To Edge Dimensions Shown For Each Fastener Apply To One Edge Only. If This Distance Is Applied On Multiple Sides There Will Be Significant Panel Distortion Unless The Panel Edges Are Supported During Installation.



Straight Through Hole Style Anvil For 0.76mm Minimum Panel Thickness

Length Of Stud +3.2mm Min



90 Degree Countersunk Hole Style Anvil For 0.75mm Or Less Panel Thickness

HRB (Rockwell Scale Hardness B)
Ensure That You Are Installing Into A Panel That Is Ductile And At OR Below The Published Maximym Recommended Hardness For The Fastener

Anvil Dimensions			
Thread	A + 0.08	B + 0.1	C + 0.2
M3	3.03	3.6	4.98
M4	4.03	4.6	6.25
M5	5.03	5.6	6.85